

---

---

There began an era when the streets were bare by five o'clock  
Children stared into the empty eyes of parents eyes of solid rock  
Electric Eye shines urgently to usher in consistency  
Just to pose a threat to all the men hired nine-to-five to service them  
A satellite dish in every backyard takes you live to the end of the world  
Electric Eye sees a billion hearts bleed and there's no place to run to, girl  
And a boy says . . . "This is just a difficult day in a typical day of a life"  
Did you think there was sunshine and blue-birds singing (there)?  
Did you think you were in Paradise? Paradise?  
Newspaper blowing a-round my feet. The words fall out into the street  
They say Extra, Extra, come read all about. The fire in Eden will never be out  
Electric Eye knew all that before the ink was dry or the paper wet  
You can dog-ear the page, or throw it away, Electric Eye's got it all on tape  
A satellite dish in every backyard takes you live to the end of the world  
Electric Eye sees a billion hearts bleed and there's no place to run to, girl  
And a boy says . . . "This is just a difficult day in a typical day of a life"  
Did you think there was sunshine and blue-birds singing (there)  
Did you think you were in Paradise?"  
Ahhh, Paradise isn't that nice. I've been there twice  
Ahhh, Paradise isn't that nice. In fact it's cold as ice  
A satellite dish in every backyard takes you live to the end of the world  
Electric Eye sees a billion hearts bleed and there's no place to run to, girl  
And a boy says . . . "This is just a difficult day in a typical day of a life"  
Did you think there was sunshine and blue-birds singing (there)  
Did you think you were in Paradise?  
This is just a difficult day in a typical day of a life  
Extra, Extra, come read all about the fire in Eden will never be out  
This is just a difficult day; this is just a difficult day  
This is just a difficult day; a difficult, difficult, difficult,  
Difficult, difficult, difficult day, In Paradise!

INTRO: F#m - E -e-b-g-e-b-g-e (single notes are lower-case)
F#m - E -e-b-g-e-b-g-e
F#m - E - C#m (4th fret)

F#m - E - D - E (last E always played at 9th fret)
F#m - E - D - E (9th fret)

F#m E D E
There began an era when the streets were bare by five o'clock
F#m E D E
Children stared into the empty eyes of parents eyes of solid rock
F#m E D E
Electric Eye shines urgently to usher in consistency
F#m E D
Just to pose a threat to all the men hired nine-to-five to service them
E D
A satellite dish in every backyard takes you live to the end of the world
E D
Electric Eye sees a billion hearts bleed and there's no place to run to, girl
Am A F#m A F#m
And a boy says . . . this is just a difficult day in a typical day of a life
A F#m
Did you think that there was sunshine and blue-birds singing (there)
A E F#m
Did you think you were in Paradise, . . . Par-a- dise

CORDS: F#m - E - D - E (last E always played at 9th fret)
F#m - E - D - E (9th fret)

F#m E
Newspaper blowing a-round my feet
D E
The words fall out into the street
F#m E
They say Extra, extra, come read all about
D E
The fire in Cleveland will never be out
F#m E
And Electric Eye knew all that
D E
Before the ink was dry or the paper wet
F#m E
You can take the Plain Dealer and throw it away
D
Because Electric Eye's got it all on tape
E D
And a satellite dish in every backyard takes you live to the end of the world
E D
Electric Eye sees a billion hearts bleed and there's no place to run to, girl

Ab A F#m A F#m  
 And a boy says . . . this is just a difficult day in a typical day of a life  
 A F#m  
 Did you think that there was sunshine and blue-birds singing (there)  
 A E  
 Did you think you were in . . . P-a-r-a- dah - ahhh ahhh ahhh . . .  
 C G C G  
 Ahhh, Par-a-dise isn't that nice. I've been there twice  
 C G C E  
 Ahhh, Par-a-dise isn't that nice. In fact it's cold as ice

CORDS: F#m - E - D - E (last E always played at 9th fret)  
 F#m - E - D - E (9th fret)

E D  
 And a satellite dish in every backyard takes you live to the end of the world  
 E D  
 Electric Eye sees a billion hearts bleed and there's no place to run to, girl  
 Ab A F#m A F#m  
 And a boy says . . . this is just a difficult day in a typical day of a life  
 A F#m  
 Did you think that there was sunshine and blue-birds singing (there)  
 A E  
 Did you think you were in P-a-r-a- d-i-s-e, . . .  
 A F#m A F#m  
 This is just a difficult day in a typical day of a life  
 F#m A  
 Extra, extra, come read all about  
 F#m E  
 The fire in Cleveland will never be out  
 A F#m  
 This is just a difficult day  
 A F#m  
 This is just a difficult day  
 A F#m  
 This is just a difficult day  
 A F#m A E  
 A difficult, difficult, difficult, difficult, difficult, difficult day  
 C#m  
 In Paradise

# Paradise

Intro:

By Don Mathers

Guitar

Transcribed by Nat Simpkins

**Staff 1:** F#m E F#m E

**Staff 2:** F#m E C#m

**Staff 3:** F#m E C#m C#m

**Staff 4:** F#m E D D E

**Staff 5:** F#m E D D D E

**Staff 6:** F#m E D D D E

**Staff 7:** F#m E D D D E

**Staff 8:** F#m E D D D E

There be-gan an er-a when the streets were bare by five o-'clock.

Chil-dren stared in-to the emp-ty eyes of par-ents eyes of sol-id rock.

E-lec-tric Eye shines ur-gent-ly to ush-er in con-sis-ten-cy. Just to

pose a threat to all the men hired nine-to-five to ser-vice them. A

## Paradise

33 **E**  
 sat - el - lite dish in ev - 'ry back - yard takes you

35 **D**  
 live to the end of the world. E -

37 **E**  
 lec - tric Eye sees a bil - lion hearts bleed and there's

39 **D**  
 no place to run to, Girl. And a boy says

41 **A** **F#m**  
 "This is just a diff - i - cult day\_\_ in a

43 **A** **F#m**  
 ty - pi - cal day of a life. Did you think that there was

45 **A** **F#m**  
 sun - shine and blue - birds sing - ing there? Did you

47 **A** **E**  
 think you were in\_\_ Par - a - dise?"\_\_ Par - a -

3  
Paradise

50 **F#m** **E** **D** **DE**  
dise?

53 **F#m** **E** **D** **DE**

56 **F#m** **E**  
News - pa - per blow - ing a - round my feet. — The

58 **D** **D** **DE**  
words fall out — in - to the street. They say

60 **F#m** **E**  
Ex - tra, Ex - tra, come read all a - bout the

62 **D** **D** **DE**  
fire in Cleve - land will nev - er be out. And

64 **F#m** **E**  
E - lec - tric Eye — knew all that, — be - fore the

66 **D** **D** **DE**  
ink was dry — or the pa - per wet. — You can

4  
Paradise

68 **F#m** **E**  
take the Plain Deal - er and throw it a - way, be - cause E -

70 **D** **D** **D E**  
lec - tric Eye's\_ got it all on tape. And a

72 **E**  
sat - el - lite dish in ev - 'ry back - yard takes you

74 **D**  
live to the end of the world. **E -**

76 **E**  
lec - tric Eye sees a bil - lion hearts bleed and there's

78 **D**  
no place to run to, Girl. And a boy says

80 **A** **Fm**  
"This is just a diff - i - cult day in a

82 **A** **Fm**  
ty - pi - cal day of a life. Did you think that there was

5  
Paradise

84 **A** **F<sub>m</sub>**  
sun - shine and blue - birds sing - ing there? Did you

86 **A** **E**  
think you were in Par - a - di - i - ise? "

89 **C** **G**  
Ahhh, Par - a - dise ain't that

93 **C** **G**  
nice. I've been there twice.

97 **C** **G**  
Ahhh, Par - a - dise is - n't so

101 **C** **E**  
nice. If not in fact it's cold as ice. \_

105 **F<sub>m</sub>** **E** **D** **D** **E**  
[Instrumental accompaniment]

109 **F<sub>m</sub>** **E** **D** **D** **E**  
[Instrumental accompaniment]



6  
Paradise

113 **E**  
sat - el - lite dish in ev - 'ry back - yard takes you

115 **D**  
live to the end of the world. **E -**

117 **E**  
lec - tric Eye sees a bil - lion hearts bleed and there's

119 **D**  
no place to run to, Girl. And a boy says

121 **A** **F#m**  
"This is just a diff - i - cult day in a

123 **A** **F#m**  
ty - pi - cal day of a life. Did you think that there was

125 **A** **F#m**  
sun - shine and blue - birds sing - ing there? Did you

127 **A** **E**  
think you were in \_\_\_\_\_ Par - a - dise? \_\_\_\_\_

7  
Paradise

130 **A** **F#m**  
"This is just a diff - i - cult day in a

132 **A** **F#m**  
ty - pi - cal of a life. Ex - tra, ex - tra, come read

134 **A** **F#m**  
all a - bout the fire in Cleve - land\_\_ will nev -

136 **E** **E** **E**  
er be out. \_\_

139 **A** **F#m**  
"This is just a diff - i - cult day;"

141 **A** **F#m**  
This is just a diff - i - cult day; a

143 **A** **F#m**  
dif - fi - cult, diff - i - cult, diff - i - cult, Diff - i - cult,

145 **A** **E** **C#m**  
dif - fi - cult, diff - i - cult day, In Par - a - dise.

# Violin Scores

PARADISE

SCORE

# "PARADISE"

Intro

F#m E F#m E F#m E G#m

TEMA: F#m E

BRIDGE

A CHORUS F#m A F#m A F#m

Detailed description: This section contains the main body of the handwritten musical score. It starts with an 'Intro' section with a key signature of two sharps (F# and C#) and a time signature of 3/4. The chords are F#m, E, F#m, E, F#m, E, and G#m. The melody is written on a single staff. Below the staff, there are several lines of guitar tablature. The 'TEMA' section follows, with chords F#m and E. The 'BRIDGE' section has a key signature change to one sharp (F#) and a time signature of 3/4, with chords D and F#. The 'CHORUS' section returns to the two-sharp key signature and 3/4 time, with chords A, F#m, A, F#m, A, and F#m. The notation includes various rhythmic values, accidentals, and dynamic markings.

## Orchestra Solo

VERSE 2

F#m E D D E F#m E D D

F#m E D D E F#m E D D

F#m E D D E F#m E D D

Detailed description: This section is labeled 'VERSE 2' and consists of three staves of musical notation. The key signature remains two sharps (F# and C#) and the time signature is 3/4. The chords are F#m, E, D, D, E, F#m, E, D, and D. The notation includes a variety of rhythmic patterns, such as eighth and sixteenth notes, and rests. Below the staves, there is extensive guitar tablature with fret numbers and rhythmic markings.

Handwritten musical score for guitar, consisting of ten staves. The score includes various musical notations such as chords (F#m, E, D, A, G, C), dynamics (>), and articulation (>). It is divided into sections labeled "BRIDGE", "CHORUS", and "Solo (Orchestra)". The key signature is two sharps (F# and C#).

V S

Handwritten musical score on five staves. The first staff contains a melodic line with notes and rests, with chord symbols A, F#m, A, F#m, A, F#m written above. The second staff contains a bass line with notes and rests, with chord symbols A, F#m, A, and a 7 chord above. The third staff contains a bass line with notes and rests, with the text "Solo (Orchestra)" written above. The fourth and fifth staves contain bass lines with notes and rests, with a 3 chord above the first two measures of the fifth staff.

Violin I

PARADISE

"

Violin I

"PARADISE"

VERSE 1.

BRIDGE

CHORUS

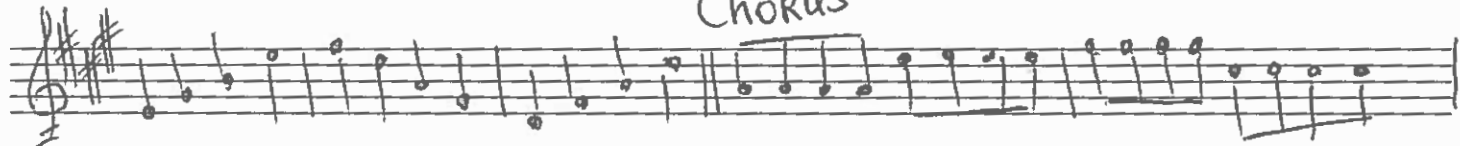
Solo (Orchestra)

VERSE 2

BRIDGE



Chorus



Bridge



Solo (Orchestra)



Bridge



Chorus



V.S →

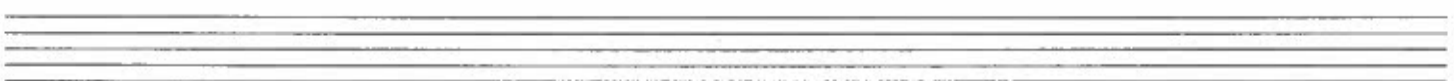
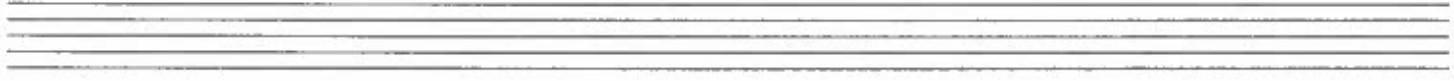
Handwritten musical notation on a single staff. The notation includes a treble clef, a key signature of one sharp (F#), and a 3/4 time signature. The first measure contains a quarter rest. The second measure features a triplet of eighth notes with a slur and an accent (>) above it. The third, fourth, and fifth measures each contain a triplet of eighth notes with a slur and an accent (>) above them. The sixth and seventh measures each contain a triplet of eighth notes with a slur and an accent (>) above them. The eighth measure contains a quarter note with an accent (>) above it. The ninth measure contains a quarter note with an accent (>) above it. The piece concludes with a double bar line and a fermata over the final note.

Ten blank musical staves, each consisting of five horizontal lines, arranged vertically on the page.



Violin II

PARADISE



Handwritten musical notation on a single staff, featuring a treble clef, a key signature of two sharps (F# and C#), and a 4/4 time signature. The notation includes a series of eighth and sixteenth notes, with a '4' written below the staff and an '8' above it.

Handwritten musical notation on a single staff, featuring a treble clef, a key signature of two sharps, and a 4/4 time signature. The section is labeled 'VERSE 1' and contains a sequence of eighth notes with accents.

Handwritten musical notation on a single staff, featuring a treble clef, a key signature of two sharps, and a 4/4 time signature. The notation includes eighth notes and rests.

Handwritten musical notation on a single staff, featuring a treble clef, a key signature of two sharps, and a 4/4 time signature. The section is labeled 'BRIDGE' and 'CHORUS' and contains a sequence of eighth notes.

Handwritten musical notation on a single staff, featuring a treble clef, a key signature of two sharps, and a 4/4 time signature. The notation includes eighth notes and rests.

Handwritten musical notation on a single staff, featuring a treble clef, a key signature of two sharps, and a 4/4 time signature. The section is labeled 'Solo (Orchestra)' and contains a sequence of eighth notes with accents.

Handwritten musical notation on a single staff, featuring a treble clef, a key signature of two sharps, and a 4/4 time signature. The section is labeled 'VERSE 2' and contains a sequence of eighth notes with accents.

Handwritten musical notation on a single staff, featuring a treble clef, a key signature of two sharps, and a 4/4 time signature. The notation includes eighth notes and rests.

Handwritten musical notation on a single staff, featuring a treble clef, a key signature of two sharps, and a 4/4 time signature. The section is labeled 'BRIDGE' and contains a sequence of eighth notes with accents.

Handwritten musical notation on a single staff, featuring a treble clef, a key signature of two sharps, and a 4/4 time signature. The section is labeled 'CHORUS' and contains a sequence of eighth notes with accents.

Handwritten musical notation on a single staff, featuring a treble clef, a key signature of two sharps, and a 4/4 time signature. The notation includes eighth notes and rests.

Handwritten musical notation on a single staff, featuring a treble clef, a key signature of two sharps, and a 4/4 time signature. The section is labeled 'BRIDGE' and contains a sequence of eighth notes with accents.

Solo (Orchestra) BRIDGE

CHORUS

VIOLIN III.

PARADISE

Handwritten musical score for Violin II, titled "PARADISE". The score is written on ten staves in treble clef with a key signature of two sharps (F# and C#). The time signature is 4/4.

The score is divided into several sections:

- VERSE 1:** The first two staves. The first staff begins with a 12-measure rest, followed by a melodic line. The second staff continues the melody with some triplets.
- BRIDGE:** The third staff, featuring a melodic line with accents.
- CHORUS:** The fourth staff, starting with a 2-measure rest, followed by a melodic line.
- VERSE 2:** The fifth and sixth staves, continuing the melodic development.
- BRIDGE:** The seventh staff, featuring a melodic line with accents.
- CHORUS:** The eighth staff, continuing the melodic line.
- BRIDGE:** The ninth staff, featuring a melodic line with accents and triplets.
- Solo (Orchestra):** The tenth staff, featuring a melodic line with accents and triplets.
- BRIDGE:** The eleventh staff, featuring a melodic line with accents.

The score includes various musical notations such as rests, notes, stems, beams, slurs, accents, and dynamic markings. There are also some handwritten annotations like "12" and "7" above notes.

Chorus

Handwritten musical notation for a chorus section, consisting of five staves. The notation includes treble clefs, a key signature of two sharps (F# and C#), and a 4/4 time signature. The music features a variety of note values including eighth and sixteenth notes, often beamed together. There are several accents (>) and slurs throughout. The first staff begins with a 4-measure rest. The fifth staff ends with a double bar line and a repeat sign.

Seven empty musical staves for manuscript paper.



VIOLINE 4

PARADISE "

Violini 4.

"PARADISE"

Handwritten musical score for Violini 4, titled "PARADISE". The score is written on ten staves in treble clef with a key signature of two sharps (F# and C#). The piece is divided into several sections:

- Intro:** The first staff begins with a double bar line and a slash, followed by a measure with a fermata. The second staff contains the main introductory melody.
- VERSE 1:** The third staff continues the melody, marked with a fermata and a slash.
- CHORUS:** The fourth staff features a series of whole notes, followed by a double bar line and a slash, then a new melodic line.
- Solo (Orchestra):** The fifth staff contains a complex melodic line with triplets and slurs.
- VERSE 2:** The sixth staff continues the melody, marked with a fermata and a slash.
- BRIDGE:** The seventh staff features a melodic line with slurs and accents.
- CHORUS:** The eighth staff continues the melodic line, marked with a fermata and a slash.
- BRIDGE:** The ninth staff features a melodic line with slurs and accents.
- Solo (Orchestra):** The tenth staff contains a complex melodic line with slurs and accents.

Handwritten musical notation on three staves. The first staff contains a sequence of eighth notes with accents and slurs, followed by two triplet markings. The second staff begins with a '5' and a slash, followed by eighth notes and a triplet. The third staff contains two triplet markings and ends with a fermata.

Ten blank musical staves for writing.